



## General Requirements

KVS/4 will work on a single computer or in an entire network. These installation instructions will take you through the installation on a single computer.

Note that KVS stores data on a central database server (Microsoft SQL Server), which is not part of KVS. If you do not have SQL Server, you can use the free "desktop edition" available from our website. SQL Server must be installed in order for KVS to work.

For demo purposes, please install KVS and SQL server on the same computer. Installing KVS/4 in a network is more complex, and should be carried out by qualified IT personnel.

## System requirements

- Windows 2000, Windows XP, or Windows Vista\*.
- Screen resolution 1280x1024 or higher recommended.

## Preparation

In order to install KVS, you will need to be logged in to your computer with full administrative rights.

You can download both SQL Server and KVS from <http://www.school-admin.biz/>. Click on "Download" to proceed to the download page.

To install SQL Server, click "Download MSDE 2000 Release A". Your browser will ask if you want to "open" or "save" the file. Choose "open" and follow the instructions on "installing SQL Server" below.

To install KVS, click "Download KVS". Your browser will ask if you want to "open" or "save" the file. Choose "open", and follow the directions on "installing KVS" below.

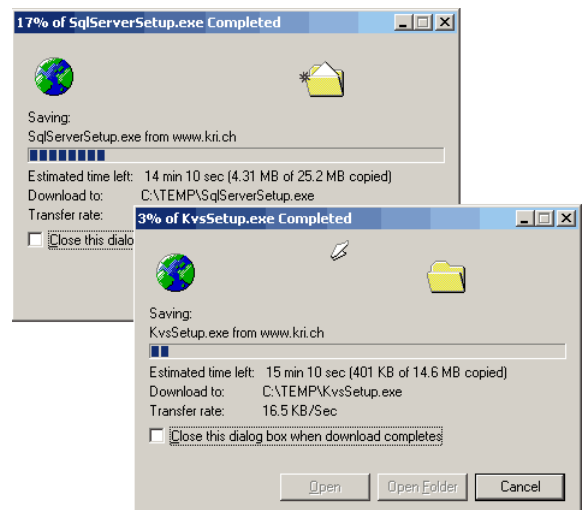
## Installing SQL Server

When you start the SQL Server install program, the installation software displays the Microsoft license agreement.

*Click "I Agree" to continue...*

\* Windows Vista is not compatible with most versions of Microsoft's SQL Server. You will need to use SQL Server 2005, with service pack 2 or later. The free SQL Server 2005 Express edition is available directly from Microsoft; you can find a link in the Support FAQ on our website.

## Downloading from the Internet





You are then asked for a directory where the installation files can be temporarily unpacked. The default directory is "C:\MSDEReIA". You can accept this entry, or change it as desired.

*Click "Finish" to continue...*

If the directory does not exist, you will be asked if it should be created.

*Click "Yes" to continue...*

The installation files will be copied into the selected directory.

Now you open a command prompt window. The command prompt can be found under "Programs:Accessories:Command-Prompt". This will open a Command Prompt window as shown at right.

From the command prompt, use the CD command to navigate to the folder containing the MSDE 2000 Release A Setup utility:

*Execute "cd c:\MSDEReIA"*

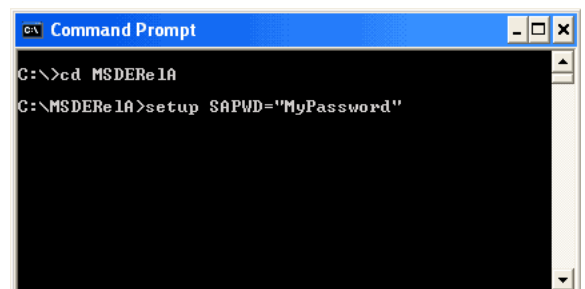
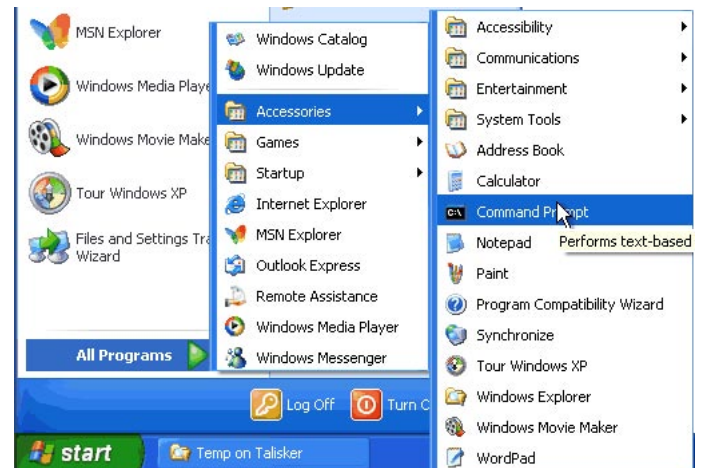
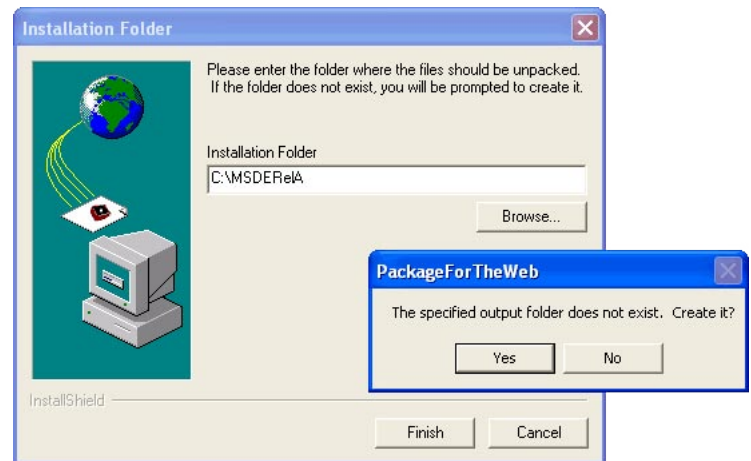
Now that you are in the folder, run the setup process for MSDE 2000:

*Execute "setup SAPWD=MyPassword"*

where "MyPassword" is the password you want to assign to the SQL Server's administrative account.

The installation process should now run to completion. When it is finished, close the "Command Prompt" window.

*Continue with the instructions on the next page to install KVS...*





## Installing KVS

Assuming you have already downloaded KVS from the Internet, you start the installation by executing "KvsSetup.exe".

KVS first prompts for the language the installation dialogs should be displayed in. Choose the language you prefer.

*Click "OK" to continue...*

Next you see the welcome screen

*Click "next" to continue...*

Then you see the KVS license agreement. In order to proceed, you must choose "I accept the license agreement".

*Click "next" to continue...*

You will then be asked to enter your name and the name of your school. The default values that appear here are those entered when your computer was set up.

You are also asked if KVS should be installed so that only you can run it, or if it should be installed so that all users have access. In most cases, you want to install KVS so that anyone can use it; this is the default.

*Click "next" to continue...*

The next screen asks you where KVS should be installed. In most cases, you can accept the default value.

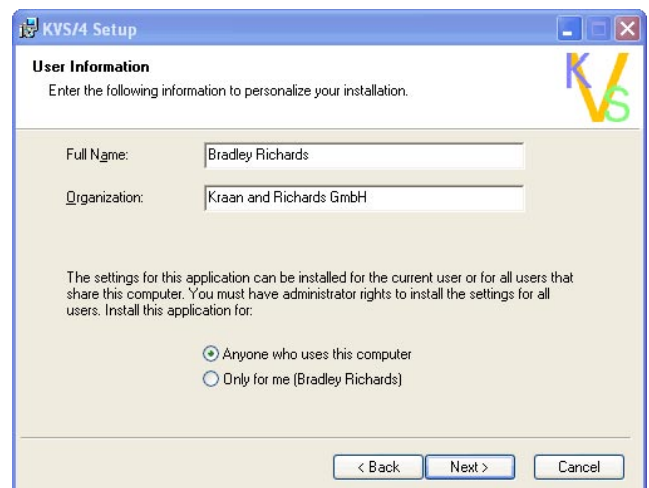
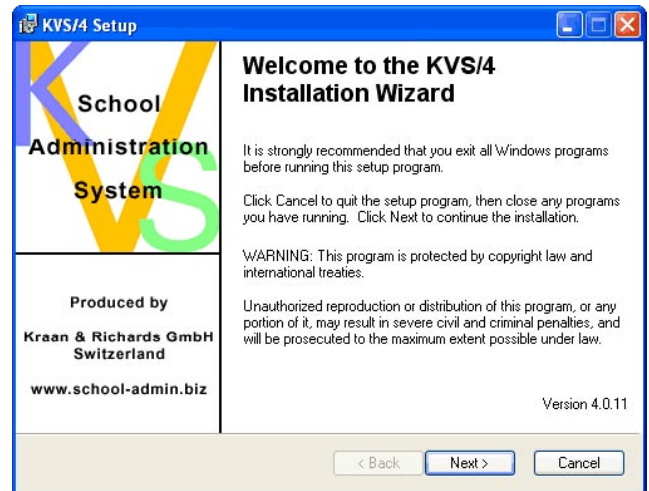
*Click "next" to continue...*

The final screen gives you a last chance to go back and change any of your entries.

*Click "next" to continue...*

KVS will now be installed. After installation is complete, we recommend restarting your computer. This will ensure that SQL Server has started correctly.

*Restart your computer...*



## Setting up KVS

You should now see the KVS icon both on your desktop and in your programs-menu. To start KVS, double-click this icon.

The KVS splash screen will display while KVS searches your network for SQL Servers. If you have a large network, and especially if you have other SQL Servers running, this can take several seconds.

Assuming that you only have one SQL Server (the one you just installed), you will then see the "New Database" screen shown at right.

You can accept the defaults, or you can change the name of the database and where it is to be stored.

*Click "OK" to continue...*

KVS will take several seconds to create an empty database. After this is complete, you will see a message that you are using KVS in "demo mode".

In "demo mode" you have access to all KVS features except for the accounting interfaces. However, the amount of data you can enter is limited to 10 of each item: 10 addresses, 10 rooms, 10 courses, etc.

*Click "OK" to continue...*

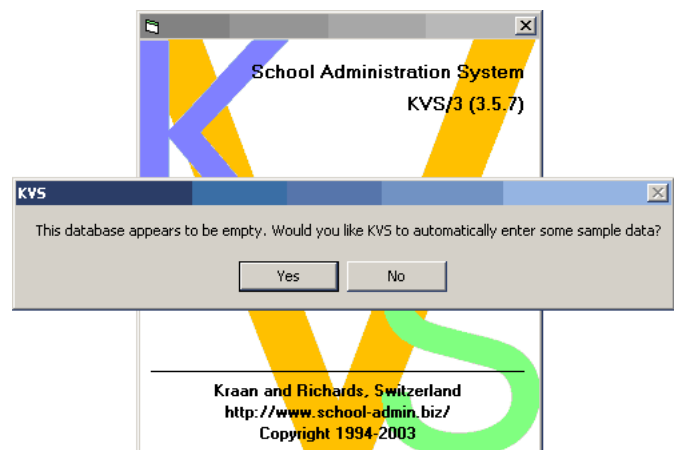
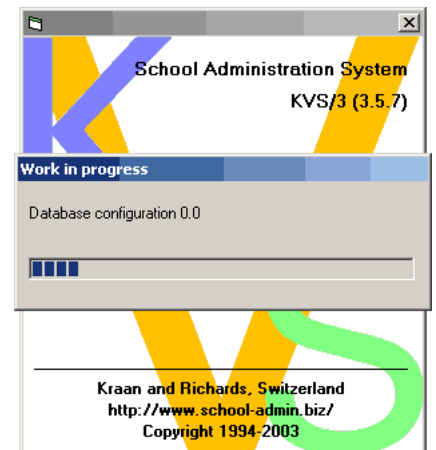
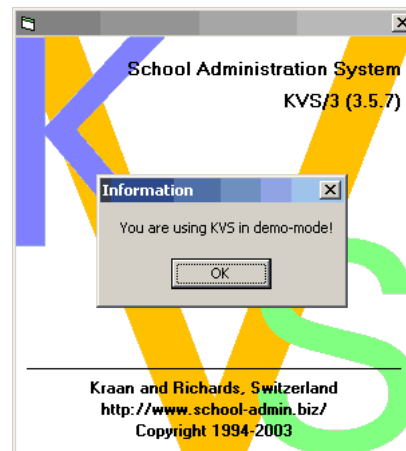
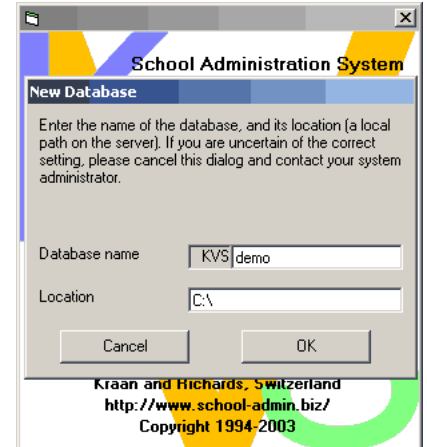
The first time you use a new database, KVS must create the internal database structures. This takes several minutes.

*When the database configuration is complete, the process will automatically continue...*

After KVS has configured the database, it will offer to enter a small amount of "demo data". This will help you start exploring KVS.

If you click "no", the database will be left completely empty.

*Click "yes" to install the demo data...*



You will now see the KVS login window. KVS supports four different privilege levels.

The passwords are all empty, so you can select any level you like. To have access to all KVS features, choose the "Management" level.

*Select a login level, leave the password blank, and click "ok" to continue...*

You can now begin using KVS!

KVS will display the main control panel, and the list of pending administrative tasks.

Course events in the demo-data are planned on Tuesdays and Thursdays - click on the leftmost icon in the toolbar, and choose any Tuesday or Thursday in the future.

To view the online handbook, choose "Help" and then "Manual".

You can find further information on our website at <http://www.school-admin.biz/>.

- For general and sales-related questions, please send e-mail to [info@school-admin.biz](mailto:info@school-admin.biz)
- For technical questions, please send e-mail to [support@school-admin.biz](mailto:support@school-admin.biz)

Enjoy your tour of KVS - we look forward to welcoming you to the KVS community!

